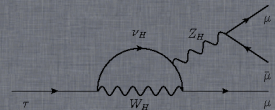
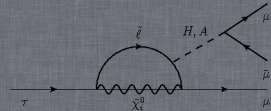
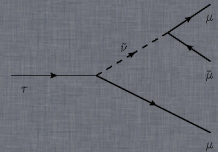
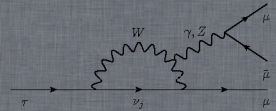


Updates on mass INMAPS?

Alberto Lusiani, Marcin Chrzęszcz

26th November 2012



Eff

Eff vs angle

Resolution X vs angle

Resolution Y vs angle

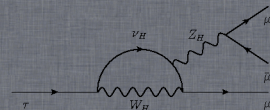
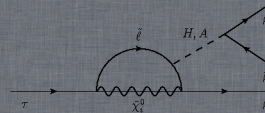
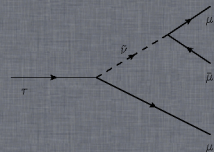
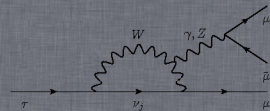
Multiplicity vs angle

Multiplicity X vs angle

Multiplicity Y vs angle

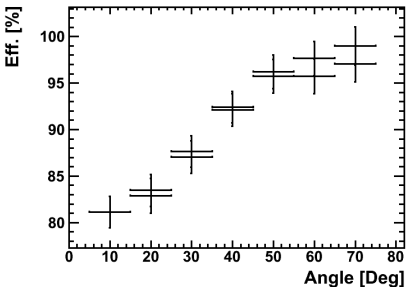
Lattice isotropy

Lattice isotropy

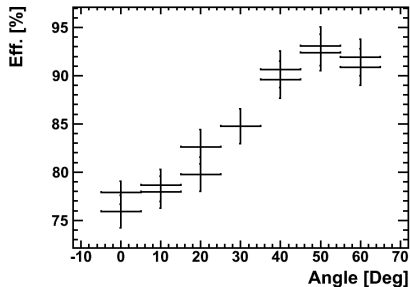


Eff vs. angle

CHIP 13

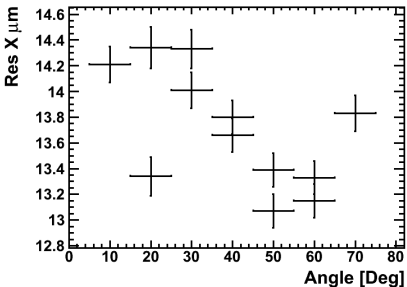


CHIP 14

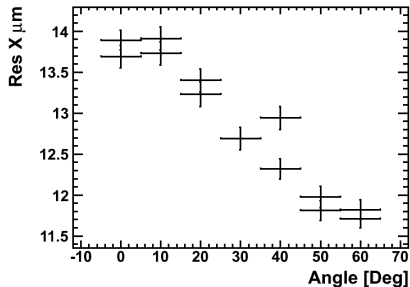


Resolution X vs angle

CHIP 13

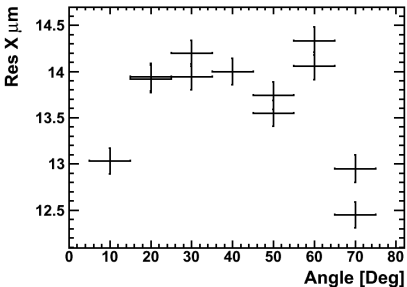


CHIP 14

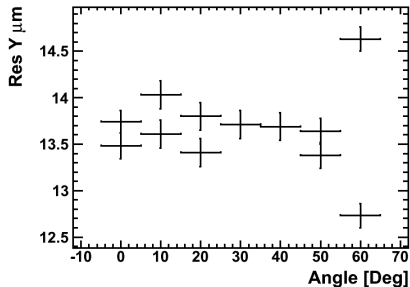


Resolution Y vs angle

CHIP 13

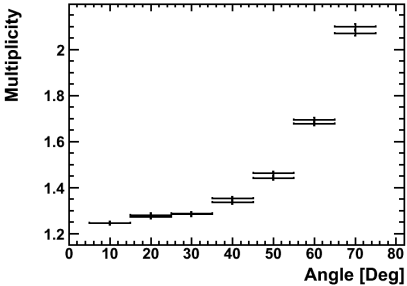


CHIP 14

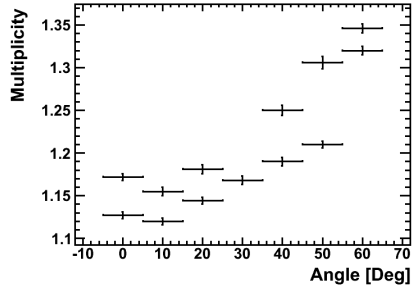


Multiplicity vs angle

CHIP 13

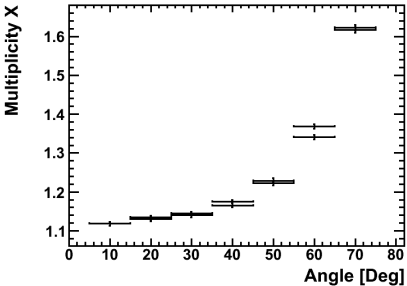


CHIP 14

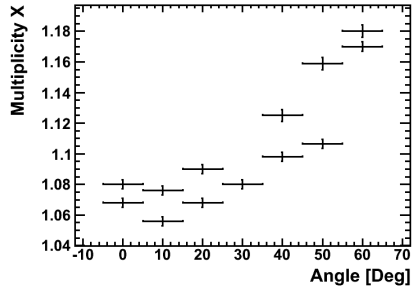


Multiplicity X vs angle

CHIP 13

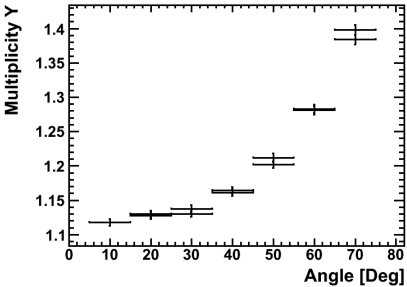


CHIP 14

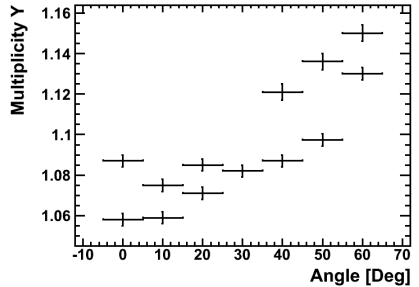


Multiplicity Y vs angle

CHIP 13

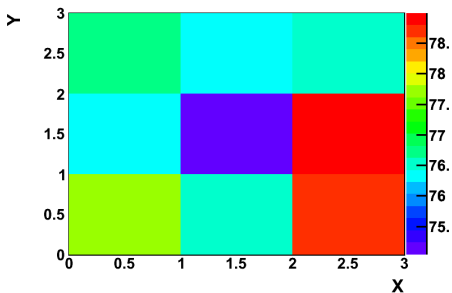


CHIP 14

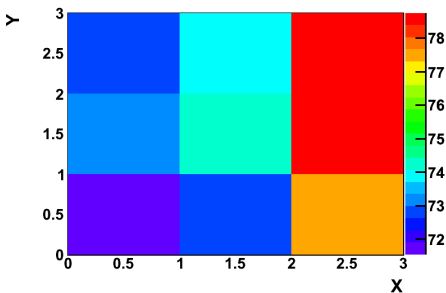


Lattice isotropy

CHIP 13

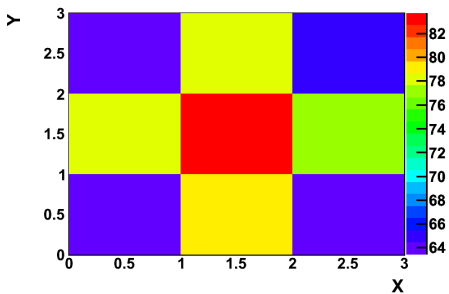


CHIP 14



Pixel isotropy

CHIP 13



CHIP 14

