

Entia non sunt multiplicanda praeter necessitatem

aka $B \rightarrow K^* \mu^- \mu^+$

Marcin Chrzaszcz
mchrzasz@cern.ch



University of
Zurich^{UZH}

Zurich meeting, CERN
September 24, 2014

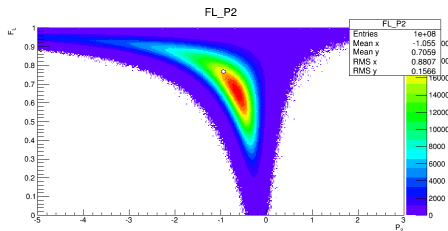
Many paths...

- Jacobian transformation
- Profile likelihoods
- Quantiles

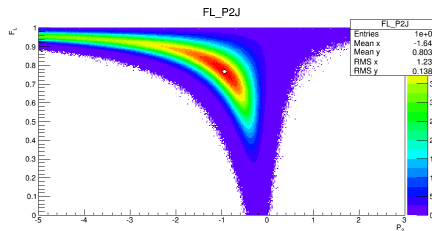
Jacobian transformation

- Now how does the new space look like.
- Important to take into account the boundary as without all my theorems fall down.
- The white point is the value from which the toy was generated.

Scatter plot $F_L : P_2$, no Jacobian



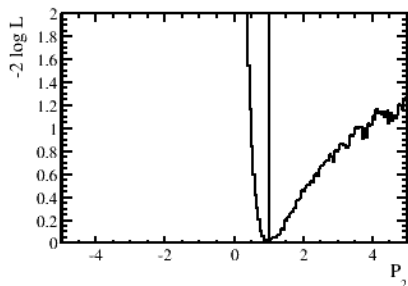
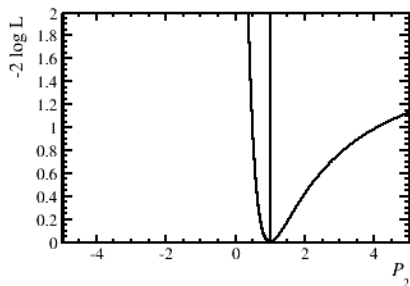
Scatter plot $F_L : P_2$, with Jacobian



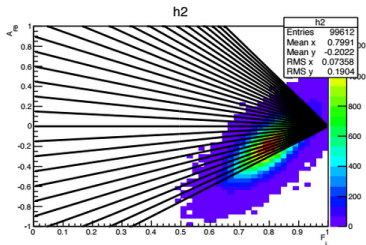
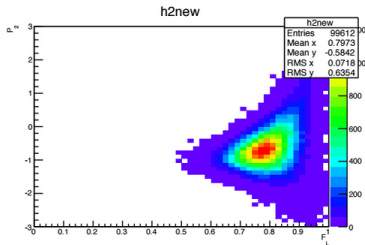
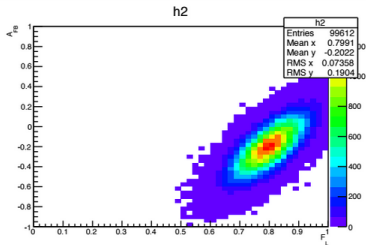
Re parametrization of pdf

- Re parametrization of the pdf gives exactly the same answer as toys taking into account the jacobian:

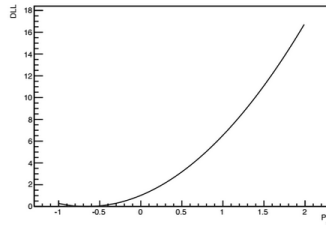
Profile likelihood from re-parametrised pdf. Profile likelihood from toys with Jacobian



Profile likelihoods

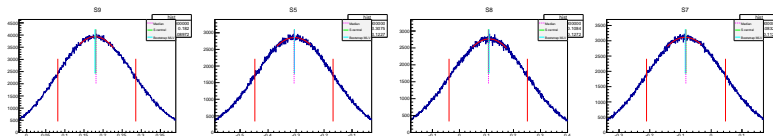


Profile Likelihood Scan



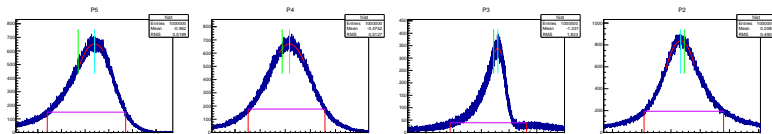
Quantiles

- Apparently quantiles stay invariant under transformations....
- One can just calculate the 68% around the median.
- This is our default option :(



Quantiles

- Apparently quantiles stay invariant under transformations....
- One can just calculate the 68% around the median.
- This is our default option :(



The End?

- Tmr we have a meeting with the referees meeting.
- Ergo bibamus?