

Light in the tunnel

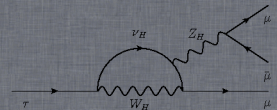
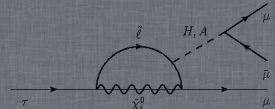
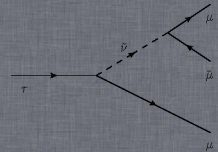
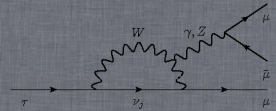
Marcin Chrzęszcz^{1,2}

¹ University of Zurich , ² Institute of Nuclear Physics, Krakow,

March 6, 2014



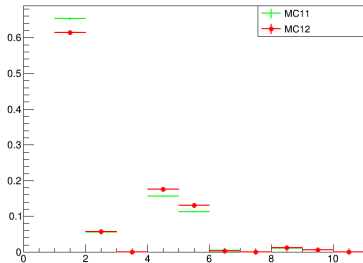
University of Zurich^{UZH}



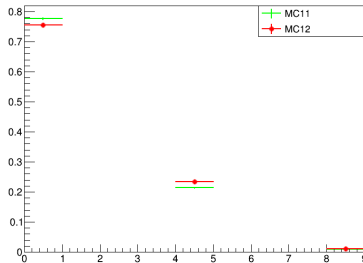
Yet a nother xcheck

- Compared 2011 ntuples and 2012 in terms of τ production.

production



production

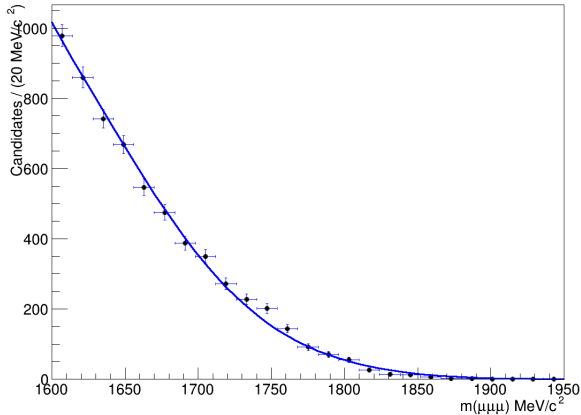


Where did we go wrong?

- Last week with Jon we checked all the efficiencies.
- I have run out of ideas where the hell is the bug.
- The easy solution will be: fuck the mixing and the stuff we are doing.
- Do it the old fashion way.
- Opinions?

η background.

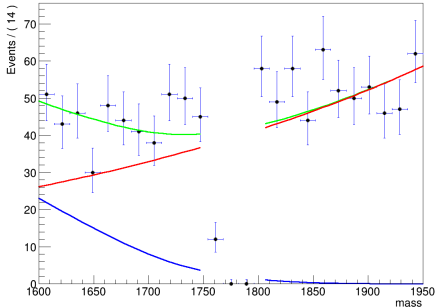
The best fit I managed to do on MC:



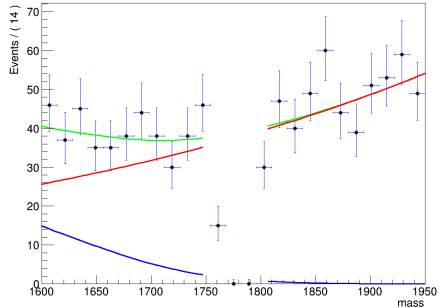
η background.

Fixing the PDF and letting the η component in the fit free some times works some times don't.

A RooPlot of "mass"



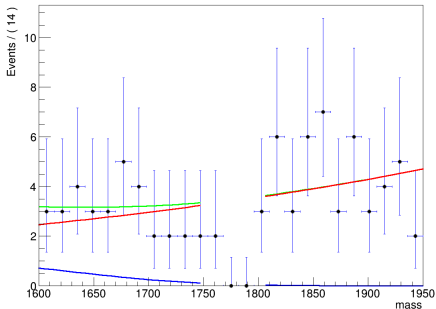
A RooPlot of "mass"



η background.

Fixing the PDF and letting the η component in the fit free some times works some times don't.

A RooPlot of "mass"



A RooPlot of "mass"

